

# Weldebräu: 257-year-old Brewing Art Combined with Latest Technology

## At a glance

### BACKGROUND

The 1752 founded private Welde brewery in Plankstadt has an annual production of 100 000 hectoliters. The annual sales amount is about 11 Mio. Euros. 40 workers under the direction of Dr. Hans Spielmann are employed at the Welde brewery. Besides the trademark Welde No1 Premium Pils sorts like 'WeldeEX', 'WeldeGold', different wheat beers, as well as trendy alcoholic beverages like 'REMIX' and 'WeldeWeizenGrape' are part of the portfolio which in combination with the 'dancing' bottle represent the modern image of Welde.

In 1994 Dr. Hans Spielmann originated the 'WeldeArtPrize' and labels ever since a limited number of 'WeldeLustBottle' with labels designed by artists.

### CHALLENGE

To meet current as well as future requirements, the Welde brewery needed a reliable, efficient an economic process control technology.

### SOLUTION

The process automation with BRAUMAT compact by Siemens. BRAUMAT compact, which combines all essential functionalities for the automation on the basis of SIMATIC PCS 7 is the optimal solution for medium-sized brewery applications, like the Welde brewery.



**The bottle with the worldwide unique design: The 'WeldeLustBottle' – the trademark of the Welde brewery. Besides the design of the Welde bottle also the production of the beer complies with latest imagination. Due to the installation of BRAUMAT compact through PSA Automation GmbH from Heidelberg the Welde brewery benefits from an integrated and efficient process automation. This boosts the productivity of the processes and protects the future of the investments.**

Welde brewery was founded in Mannheimer Street in Schwetzingen in 1752. The former small home-brewery came over the years to be a medium-sized company. Meanwhile it employs about 40 workers and its production center is located in Plankstadt. Even though the Welde brewery looks back on a fine tradition this brewery portrays a trendsetter in the German brewing industry. Numerous innovative ideas like the 'dancing' bottle have been realized since the appointment of Dr. Hans Spielmann. These ideas breathe new life into the tradition-rich brewing culture and complement them excellent. Also the technical equipment of the Welde brewery is updated. Regarding the process automation Welde chose BRAUMAT compact based on SIMATIC PCS 7. Moreover a variety of different applications like the sand filter or the cooler have been implemented into the control system by PSA. So the master brewer has the overview and the control over the whole process. 'Continuity is pretty important during the brewing of beer. When someone always drinks Welde because one likes the taste, every change would be noticed and estimated negative.' Commented Welde's master brewer Horst Wandinger. He's successor Stephan Dück can use from now on the numerous advantages of BRAUMAT compact, which ensure the necessary continuity.

### SAVING PRODUCT QUALITY

One of the most helpful advantages of BRAUMAT compact is the function that Welde's brewing master Stephan Dück can now conduct amendments

## BENEFIT

- Increasing productivity
- Saving Investments
- More flexibility for new products and solutions
- Constantly high product quality
- More availability in the long run
- Easier recipe generation and control
- Less engineering required



**Certified master brewer  
Horst Wandinger**

## CONTACT

Editor:

PSA GmbH

Hauheckenweg 2-4

69123 Heidelberg

Germany

Phone +49-62 21-739 16 60

Fax +49-62 21-739 16 66

info@psa-automation.com

www.psa-automation.com

User:

WELDEBRÄU GmbH und Co. KG

Brauereistrasse 1

68723 Plankstadt

Germany

Phone +49 (0)6202/9300-0

Fax +49 (0)6202/9300-90

info@welde.de

www.welde.de

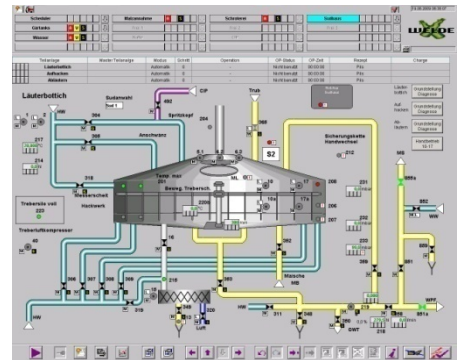
on his own. So he gains more flexibility by having the opportunity to adapt the brewing process faster to new products. Furthermore he can immediately react on changed regulations regarding product safety and environmental protection. The recipe control in BRAUMAT compact happens by the two-stage control logic:

The controls of the first stage are grouped into logical functions and solve associated subtasks, like routing. The second stage, the unit recipe, places the functions into a recipe-specific sequence and combines them with the recipe parameters of the respective beer type. The amendments of the recipe sequences can be carried out by online operations— recipes are more portable and more flexible.

Additionally BRAUMAT compact guarantees an end-to-end documentation as well as traceability. This makes it possible to reproduce process flows, to log batches and to use an interface for batch tracing more easily. Besides this functions the capture of all reference and actual values as well as manual interventions and the presence of a reference to the recipe used contribute to a steadily high product quality of the Welde beer.

The system's end-to-end approach ensures the reduction of downtimes due to consistent, error-free configuration data. Is there nevertheless a problem, the comprehensive system diagnosis of all components enables the fast elimination of the problem. In the case of a hardware failure the system is saved by redundant components.

Based on the tested standard software as well as consistent programming BRAUMAT compact causes a reduction of expenses and effort referring to the engineering. Through a central engineering system exists maximum data consistency. Furthermore time-saving tools enable automatic mass engineering, e.g. of valves.



## FLEXIBILITY IN EVERY SENSE

Not only for medium-sized breweries like the Welde brewery BRAUMAT is a useful investment. For bigger breweries with a number of production centers there is the opportunity of an installation of SIMATIC PCS BRAUMAT Library. BRAUMAT Library can be tailor-made for the respective size of the production center.

With BRAUMAT compact there are a lot more functions available for the Welde brewery. Those promote a fluently brewing procedure to produce a sterling end-product. For this the Welde brewery received a lot of national and international awards in the last 16 years during brewing master Horst Wandinger had been in command. One of these awards is gold for Welde's trademark Welde No1 by the worldwide announced 'Monde Selection' in Brussels in 2008.

In the future Welde's new brewing master Stephan Dück can control the brewing process much more comfortable with BRAUMAT compact to build on the successes of his predecessor.